

# CASE STUDY 9.07

## PANASIL® INITIAL CONTACT X-LIGHT



*Dr. med. dent.  
Matthias J. Roggendorf  
Zahnklinik 1 – Zahnerhaltung  
und Parodontologie,  
University Clinic Erlangen*

## Panasil® initial contact X-light – Convincingly versatile

Silicones have proven themselves for the impression of preparations for decades. Addition-curing silicones have proven to be suitable precision impression materials with a high degree of handling safety and user friendliness. As far as the development of silicone impression materials is concerned, Kettenbach from Eschenburg, Germany is one of the most innovative manufacturers on the market. For example, the preliminary impression material Panasil® binetics putty is the first real putty A-silicone which does not have to be kneaded per hand, but can be dispensed directly via the Plug & Press® Dispenser and is immediately ready for use.

The aim of Kettenbach's research department was to adapt the properties of the new wash material Panasil® initial contact X-light especially for the specific demands when taking impressions of crowns and bridges. For the first time, a wash impression material is available, which, due to its distinct initial hydrophilicity during the initial application phase, will warrant an ideal flowing onto the moist surface, and constantly keep this hydrophilic property during the total working time. This results in detail accurate impressions even on surfaces with residual moisture.

In the process, it is important that, on the one hand, the material should have a very low viscosity in order to depict finest details well. On the other, it must also be sufficiently viscous in order to not be displaced out of the sulcus by the surrounding mucous membrane after having been syringed around a preparation stump which will often have its preparation margin located sub-gingivally. Therefore, ideally, a wash material should combine both properties, so it should be thixotropic in order to not flow off the tooth, and flowable enough in order to be pressed into the sulcus and thus the preparation margin.

# C A S E S T U D Y

## PANASIL® INITIAL CONTACT X-LIGHT

Those are exactly the properties that Kettenbach has given Panasil® initial contact X-light.

Also, the violet colour is ideal for the handler to be able to exactly control the impression. Moreover, the contrast between the light, yellow preliminary impression Material Panasil® binetics putty and the dark, violet colour of the wash material Panasil® initial contact X-light enables an ideal control possibility after taking the impression.

The material is available in a double chamber cartridge for dispensing guns, and easily and safely applied with a mixing tip. Every dentist is today familiar with this application form which guarantees reproducible results, as the mixing ratio is adhered to perfectly and the material can be applied directly after mixing. The total working time and the final hardness are ideally adjusted, and the bond between the preliminary impression and the wash material works perfectly.

Due to its colour, Panasil® initial contact X-light is also ideal for use within the scope of fitting inlays, crowns and bridges, as it can depict even the slightest fitting inaccuracies.

It can therefore be applied via mixing tip and attached intra-oral tip, which is also used to syringe around the preparation stump, directly into the inlay cavity or the crown or bridge respectively.



*Initial situation: Old amalgam filling on tooth 46, lingual wall fractured and temporarily repaired with a compomer*



*Details of the preliminary impression: Prepared situation*



*Situation after removal of the amalgam filling and the repair filling*



*Cutting out the preliminary impression*



*Situation after placement of build-up filling with composite and crown preparation*



*Finished cut out preliminary impression*



*Placed retraction chord before impression taking*



*Removal of placed retraction chord before the correction wash impression*



*Preliminary impression with Panasil® binetics putty*



*Panasil® initial contact X-light can be applied directly from the cartridge with a mixing tip and attached intra-oral tip.*

# C A S E S T U D Y

## PANASIL® INITIAL CONTACT X-LIGHT



*The tip of the intra-oral tip should always remain in the material*



*Situation after quickly opening the mouth before removal of bite registration*



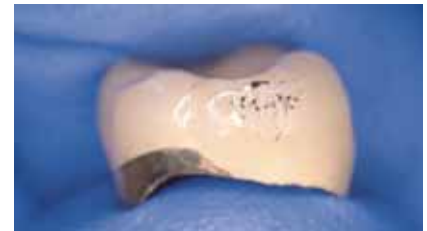
*Fitting: Control of the marginal fit with a pointed probe*



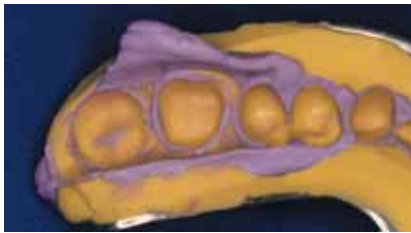
*Correction impression tray in situ*



*Cementing in the provisional crown after removal of all cement remains and occlusion control*



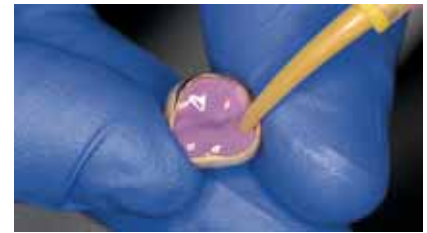
*Marking of the too tight approximal contact with an occlusion foil*



*Details of the correction impression*



*Finished crown on the saw model (vestibular)*



*Soft test fit: Panasil® initial contact X-light fills out the crown*



*Bite registration: Application of Futar®D onto the lower teeth*



*Crown on the saw model (lingual)*



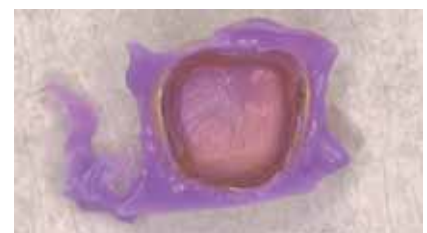
*Fitting of crown: Excess Panasil® initial contact X-light is pressed out circularly*



*Bite registration*



*Fully veneered crown on tooth 46 (inside view)*



*The soft test fit shows some areas which still have to be removed*

## PANASIL® INITIAL CONTACT X-LIGHT

# CASE STUDY 9.07



*Pressed through areas that are marked and have to be removed with a bur (stone or round bur)*



*Insertion of glasionomer cement into the crown*



*Removal of excess cement in the area of the approximal contact with dental floss*



*Control of occlusal contact with black Hanel® foil*



*Fitting of crown: surplus cement escapes circularly*



*Inserted crown provision*



*Cleaned and dried situation before insertion of crown*

## CONCLUSION

*It can be concluded that with the new wash material Panasil® initial contact X-light, Kettenbach has created an ideal partner for Panasil® binetics putty, which is suited for all situations within the scope of impression-taking of crowns and bridges. On the other hand, Panasil® initial contact light should be used for one step putty wash impressions, as this will not*

*be dispersed from the cavity as easily by the putty material, and displays an equally detail-accurate depiction of the preparation margins as Panasil® initial contact X-light. Due to the sum of its positive properties, Panasil® initial contact X-light can be highly recommended for the intended application areas.*

**For further information contact:**  
**KETTENBACH GmbH & Co. KG**  
Im Heerfeld 7  
35713 Eschenburg/Germany  
Phone +49 (27 74) 7 05-0  
Fax +49 (27 74) 7 05-33

**PANASIL® INITIAL CONTACT X-LIGHT**