

Making a brilliant impression

Here, **LAMBERT M FICK** (BDS Rand) looks at a brand new addition-cured impression material, produced in Germany. Expecting a run of the mill product, Lambert was surprised to find himself working with "a very different animal" and "the most forgiving impression material" he had ever used...

I WAS asked to evaluate a new addition-cured elastometric impression material made by Kettenbach, Germany. The material is based on polyvinyl siloxane. Having worked very happily with a well known "Brand X" material for a number of years without problem, I was certain that there would be little difference between one addition-cured material and another.

To my surprise, however, I found Panasil Tray to be a very different animal. It is simply the most forgiving impression material I have ever used. It copes with moisture contamination and blood seepage amazingly well; indeed, I have found that when taking an impression, it is even preferable to have the teeth moist (though not wet) rather than bone dry. I had not found this charac-

teristic in a material since using Reversible Hydrocolloid.

Perfect mix

The material comes in two viscosities - a medium body tray material, Panasil Tray, and a light body material, Panasil Contact Plus. Panasil Tray is available in convenient pre-packed tubes and is mixed in an automatic delivery system with a dynamic mixer, resulting in a consistently perfect mix. Panasil Contact Plus comes in auto-mix cartridges.

The tray material, Panasil Tray, is available in two varieties 'Fast' and 'Soft'. The product technical information sheet gives the total setting time for the Fast as three minutes and 20 seconds, whilst the Soft has a total setting time of four minutes, at a working temperature of 23°C (14°F). Panasil Tray Fast has an additional property in that it sets to a harder texture than Panasil Tray Soft, which makes it ideal for taking pick up impressions of plastic impression posts when constructing cast gold post and cores.

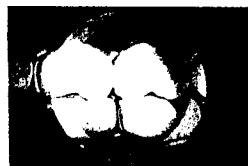


• Prepared upper centrals

The Difference is in the Hardness! Discover Futar D Occlusion!



Futar D Occlusion is applied straight from the cartridge, onto the occlusal surfaces.



Futar D Occlusion bite registrations can already be checked in the mouth - simply break off the excess material.



Futar D Occlusion sets within 90 seconds



Futar D Occlusion is easily trimmed with a rotary cutter

Futar® D Occlusion

"...We were pleased to see on application, Futar® D exhibited the following advantages:

- It is extremely hard - Shore D hardness of 43
- Has minimal elasticity
- Sets in 90 seconds
- Thixotropic (ie. flows well but does not 'slump' or run into deep fissures)"

"A Practitioner's Perspective" - Dental Practice August 2001
Trevor Bigg BDS, MGDSt, RCSEdEng - Private Practitioner
Edward Hens BDS(Low), MRD(Inst of CdA) - Specialist in Prosthodontics and
Clinical Lecturer Eastman Dental Institute

Consistency

The consistency is perfect and the tray is easy to remove from the mouth. Obviously, where there are severe undercuts or large interdental spaces it is preferable to block these out with a material such as Ultradent caulking or Untradent Putty (Optident). Panasil Tray is also odourless and tasteless, adding to its patient-friendliness.



• Panasil Tray Soft and Contact Plus

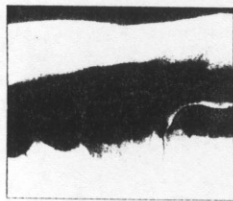
My standard impression technique is to place a retraction cord early on in the preparation of the tooth. This ensures that I do not traumatise the gingivae and defines the limit of the sulcus. I use Pearsalls Braded waxed suture silk (US 2/0) which is black in colour, making it readily



Panadent Ltd, 149 Sevenoaks Way, Orpington, Kent BR5 3AQ
T: 01689 881788 F: 01689 881789
E: info@panadentltd.co.uk

See more on-line:
www.panadent.net

Making a brilliant impression



• Kettosil opposing arch

Its dimensional stability is superb - the only real disadvantage I can see is that it is necessary to wait one hour before casting the impressions, as is the case for all addition-cured silicone materials that generate hydrogen during the final polymerisation phase.

Both materials can be disinfected using suitable agents such as Silosept, prior to sending them to the laboratory. It is important to

realise that since the material is hydrophilic, the impressions must be rinsed and dried following disinfection; they must then obviously be stored in a dry place prior to casting.

The colours of the material, when photographed (Panasil Contact Plus is violet purple and Tray Soft is buttermilk yellow) make a superb contrast and this results in an impression that is

exceptionally easy to read.

The accompanying pictures clearly demonstrate the ability of Panasil Contact Plus to reproduce the crevice with great accuracy and the clarity is obvious.

In conclusion, these materials are very much a must have in the stock cupboard of any clinician who needs total accuracy with ease of handling and high patient acceptability. □

About our author...

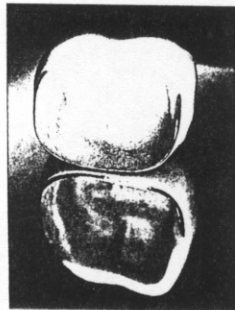


Lambert M Fick is a specialist prosthodontist with a clinic on Harley Street, London. Lambert is also the founding president of the British Academy of Aesthetic Dentistry.

visible. If the gingivae have collapsed over the cord during preparation, I apply a second cord on top of the first to further displace the gingival tissue. I then later remove this second cord and ensure that there is sufficient gingival displacement and there is no seepage prior to taking the impression.

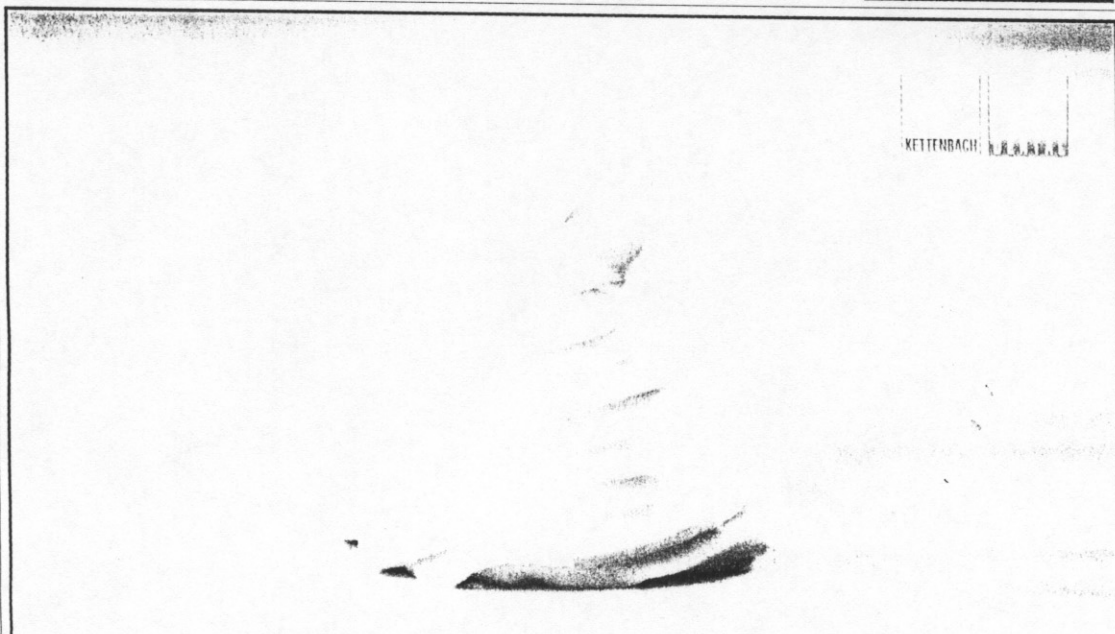
Rule of thumb

A simple rule of thumb is to note that if the crevice is not clearly defined and visible to the eye the impression material will not flow into it. The cord is then replaced and I proceed to take the impression using Panasil Tray Soft in a metal rim lock tray or a rigid plastic disposable tray. I apply the Panasil Contact Plus (which comes in an auto-mix cartridge system - another plus) directly to the gingival crevice and tooth. In summer, when the ambient temperature is higher (23°C) I am happy to remove the tray after two minutes. In winter, I allow a further 30-60 seconds to ensure complete polymerisation. I would, in passing, make one plea to the manufacturers of trays - please come up with a disposable rim lock tray! The disposable trays available on the market have so many holes in them that the material exits via the holes, rather than applying pressure to the teeth as with the rim lock tray, necessitating needless retakes.



• Finished crown

The opposing arch impression is taken using another product from Kettenbach - Kettosil. This material sets in two minutes 30 seconds, is completely stable and very accurate out of the mouth. I have had excellent results with Kettosil and I have not personally used alginate (irreversible hydro-colloid) since discovering the material. The impact is such that I have a much greater improvement in accuracy with my opposing models - my technicians are delighted and so am I. I also use the material for impressions for night guards, orthodontic appliances and chrome cobalt dentures.



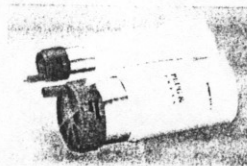
The new preliminary impression material. Firm - without any ifs or buts.



Panasil tray fast: Setting time 3' 20", increased final hardness for two-step impressions.



Convenient to use: Insert the foil bag into the cartridge and press it into place.



Panasil tray soft: Setting time 4' 00", lower final hardness for one-step putty-wash impressions.

This newly developed foil bag system can be used in electrical dosing and mixing devices. Straightforward, clean, safe and fast.

Panasil® Tray

Being highly firm is an important advantage for a preliminary impression material. For example, the pressure builds up well and increases the precision. Like this, the material stays put, which is very convenient for you and your patients.

Panasil tray is a new, very firm heavy body material, supplied in fast and soft versions. Panasil Tray Fast sets harder and is very easily cut out for taking two-step impressions. Panasil Tray Soft is specifically indicated for taking one-step putty-wash impressions.

Both versions of Panasil Tray combine well with the well-known Panasil Contact Plus and Panasil Contact Two in one light body materials. Their setting characteristics are matched optimally.

By using the convenient Plug & Press foil bags, you will be able to process this new Panasil Tray material just as you really want to - straightforward, clean, safe and fast.



PANADENT
THE NEXT GENERATION

Panadent Ltd, 149 Sevenoaks Way, Orpington, Kent BR5 3AQ
T: 01689 881788 F: 01689 881789
E: Info@panadentltd.co.uk

See more on-line:
www.panadent.net